



The Georgia Thrasher

Great National Conference "Making Managers into Leaders"

August 2009
Volume 23

2008- 2009

Georgia DMA

Board of Directors

President

Sharon Clark, CDM, CFPP
Glenvue Nursing Home
PO Box 523
Glennville, Ga. 30427
912-654-0097(H)
912-654-2138 x125 (W)
Sharonclark6@yahoo.com

President-elect

Shirley Singleton, CDM, CFPP
PO Box 1362
Lyons GA 30436
706-994-2291
(Cdmsas@yahoo.com)

Secretary

Larry Jackson, CDM, CFPP
196 Buttercup Lane
Americus, GA 31709
229-931-1372 (W)
229-591-1538 (C)
229-924-0951 (H)
Jackson3705@bellsouth.net

Treasurer

Barbara Braswell
1750 Marcel Ave SW
Atlanta Ga. 30311
404-762-1782
bjsbraswell43@bellsouth.net

Immediate Past-

President

Margie Widener
8088 Knoxville Road
Lizella, GA. 31052
478-784-1500 (W)



FALL WORKSHOP AND FOOD SHOW!!!

WHEN: October 21st, 22nd and 23rd.

WHERE: Best Western Riverside Inn

2400 Riverside Dr. Macon, GA. 31204

PHONE: 478.743.6311

ROOM RATE: \$55.99 Plus tax. Make reservations

By October 5, 2009.

BRING SOMEONE NEW TO THE MEETING!!!!

INSIDE NEWS

| | |
|--------------------|---|
| National Info | 2 |
| Secretary's letter | 2 |
| President's Letter | 3 |
| New Members | 4 |
| President-elect | 4 |
| National Pictures | 6 |

**DMA'S 50th
ANNIVERSARY BASH!**

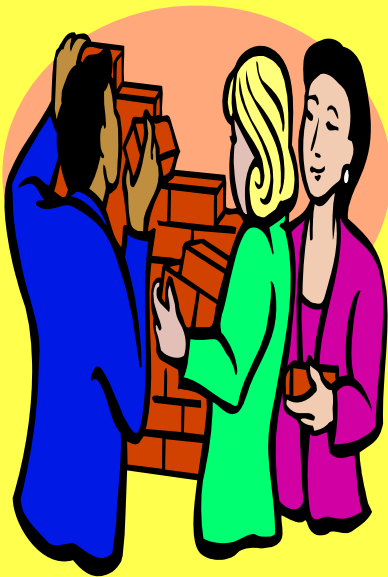
PLAN NOW TO ATTEND

2010 Chicago Illinois

Chicago Hilton Towers, July, 4—8
More info will be on the web site
during the year.

2011 Gaylord Texas

Gaylord Texan, June, 26—30



From the Secretary's Desk
Greetings fellow GDMA Members.
It is with great pleasure and honor, that I write this letter. I thank you for your trust I received this past year as secretary. It was a rewarding experience.

I feel we had a good year with GA hosting the National Conference. We put our best foot forward. We had great attendance at the conference and it was a wonderful to win the Platinum Award for the state. I had the honor to march in the banner parade of the states, (thanks to Ms. Sharon for asking me) I will never forget it. By the way,

this was my first National Conference and I am looking forward to attending many more. I'm HOOKED!!

The year as secretary is coming to a close. I am getting ready to move to the next level as a volunteer in the GDMA. It will be a pleasure to serve as your President-elect for next year. I will do the best job I can and give my support to our incoming President Ms Shirley Singleton in order to move the chapter to the next level of greatness.

With the award that we won this year was a knock on the door, next year (and beyond) we are going to "kick it in" because I believe we can be the best in the nation.

One final thanks to our out going President, Ms Sharon Clark, for her support and helping me and this chapter to reach our goals!

Thanks to all of you for your prayers and support you have given me this year. May God continue to Bless each of you .
Hope to see you at the GDMA Fall Meeting and Food Show

Larry Jackson, CDM, CFPP
GDMA Secretary
Jackson3705@bellsouth.net



CDM, CFPP Now in Healthcare Reform Bill

Speak Up for HR Bill 1638!

I HOPE YOU HAVE WRITTEN YOUR REPRESENTATIVE TO MAKE SURE THEY VOTE FOR THIS BILL. DO NOT LET THIS PASS US BY. WE HAVE TO KEEP THE BILL ALIVE. DO it TODAY!!!!

Contact National DMA to get your representatives name and address.

PRESIDENT'S REPORT AND FAREWELL LETTER

WHAT A GOOD CONFERENCE!!!!

Hi All;

Just a note to let you know I have enjoyed my year as your President. I know you are getting good leaders for the upcoming year. They will need our support to accomplish their goals for GDMA. I will continue to work with GDMA to help make our state one of the most recognized in the all the states. We must volunteer for committees and assist others in the volunteer positions. The officers can not do it alone. I challenge all our members to volunteer for the coming year.

I could not have accomplished the "Platinum Award" for our chapter if it had not been for the volunteers that were there to help.

Most all of you have some expertise you can give to the chapter and one does not know the good feeling until they try it.

Our fall meeting is approaching and I hope to see as many at the fall meeting in October as were at the National Meeting. The National Meeting was a wonderful experience and good fellowship for those we don't get to see often.

Take Care and God Bless you.

Love to all;

Sharon Clark, CDM,CFPP

GDMA President

CMS Survey information clarification on the Web site Front Page: This letter was written in response to the concern and need for clarification about regulations.

Since the release of updated guidance from CMS, which took effect Sept. 1, 2008, DMA members as well as related health professionals have been asking questions about role delineation and what the CDM, CFPP is qualified and authorized to do. DMA contacted CMS. CMS responded with specific answers, and also pointed out that the language of F-Tag 325 has not changed; only the interpretative guidance for surveyors was revised.

Please read and print this information off the website and make it available at your facility for your RD.

Read the CMS letter to the CBDM (PDF) >>
View the CDM, CFPP Self-Assessment Tool (PDF)

Newsletter Editor's Notes

Thanks to all of you who send articles and information to the newsletter. Our Chapter won the Newsletter award again this year.

The goals for the newsletter next year are to be more cost efficient and to produce an interesting and informative newsletter.

- To accomplish the first goal I will need all of your e-mail addresses at home or at work.**
- Please send your e-mail address to me at: jlandew@bellsouth.net**
- The second goal can be accomplished with your help by sending articles and information about your facility's best practices and your district activities.**

Please help me and the chapter continue to publish a newsletter that is worth reading.

Emily Landrum, GDMA Newsletter Editor

E-mail jlandew@bellsouth.net

HIGHLIGHTS FOR THE NATIONAL CONFERENCE

wonderful time and educational experience



Trip to the Aquarium



***Geraldine & Scrap-
Valerie, Shirley, Shirley, Margie***



Books



Culinary Wisdom



***Larry, Shirley, Sharon
Banner Parade***



DMA Friends

The Groups



Emily & Margie

**THE NEW
DISTRICT
PRESIDENT'S**

ATLANTA
Ronald B. Scott

CANOOCHEE
Daphne Brown

NORTHWEST
No news from this district

OCONEE
Kathy Henry
Hart City Hospital
10737 Royston GA 30662
(706) 856-6100
(706) 246-0752

OCUMLGEE

Not active

SOWEGA
Ann Black
Magnolia Manor
363 Shorty B Road
Hartsfield, Ga. 31756
229-985-4320 (W)
229-941-5739 (H)

These are the active districts. Districts boundaries are by zip codes. If you are not sure of your district please call one of these District Presidents and they can help you. If your district is not meeting and you need the clock hours they can help with that also.

Dates for Newsletter Printings:

**Nov. 15, Feb. 15, May 15,
and
Aug15.**

**Emily W. Landrum, CDM,
CFPP**

**1725-A Clay Road SW
Mableton, Georgia 30126
770-948-5691 (H)**

Jlandew@bellsouth.net

NEWS FROM THE DISTRICTS

Please update any changes in the district information to ensure all members can attend meetings to obtain clock hours.

NEED CLOCK HOURS

ATLANTA DISTRICT

Atlanta District fall meeting will be held at Sysco Atlanta Food Service

President—Ronald B. Scott 678-377-8191

President-elect— Barbara Gable 770-562-5262

Carolyn Ford –Treasurer 770-427-8727

Caroline Estime—Secretary 404-767-8115

CANOOCHEE DISTRICT

The CANOOCHEE District meetings will be held at RJ's Restaurant in Statesboro .

President— Daphne Brown

President—elect

Secretary— Amy Scott

Treasurer— Beulah Hilton

SOWEGA DISTRICT

Past President— Sherlene Johnson

President— Ann Black

President—elect Donald Epperson

Secretary—Treasurer _ Terry Sirmans

Chaplin— Nina Carroll

The District meets every other Month: Jan, March, May, July, Sept, and Nov.

OCONEE DISTRICT

Our meetings are held at Cobb Center on Turner Street in Royston, Ga. 30662. It is an all day meeting with Six (6) clock hours

Past President-Sharon Ayers

President—Kathy Henry

President-elect

Secretary—Mary Crunkleton

Treasurer— Pam Turpin

Chaplin—Charlie Mahoney

OCUMLGEE DISTRICT

Not Active

Please send your CURRENT district information to be published in the next newsletter. E-Mail Address: jlandew@bellsouth.net



The Leading Distributor to Healthcare in Georgia

- Menu, Recipe & Traycard Programs
- Product Efficiency Analysis
- Interactive, Web Based Training
- ServSafe Training
- Continuing Education Opportunities
- Financial Management Tools

Ingenium—Max

A Fully Integrated Menu, Traycard
and Resident Assessment Software
Solution

2225 Riverdale Road
PO Box 490379
College Park, GA 30349

Mike Birke,
SR. Healthcare Acct Executive
404-592-2609

Allison Goolsby, RD,LD
Healthcare Marketing Spec.
404-592-2601

GEORGIA



**DIETARY MANAGERS
ASSOCIATION**

The Georgia Thrasher
Emily W. Landrum, CDM, CFPP
Editor,
1725-A Clay Road, SW
Mableton, Georgia, 30126
E-mail jlandew@bellsouth.net
770-948-5691